

# Cell Imaging System

Real-time automated live cell imaging system inside your incubator



## Celloger® Mini Plus

Imaging modes

Brightfield, Fluorescence (Green / Red)

Fluorescence

Green : Excitation (470/40x) / Emission (510lp)  
Red : Excitation (510/84x) / Emission (570lp)

Stage

Motorized XYZ (camera moving)



*Boost your research efficiency by enabling real-time cell monitoring and analysis—directly inside your CO2 incubator. Conduct advanced research and data analysis without removing cells, preserving experimental integrity while saving valuable time and effort.*

### Real-time walk-away monitoring

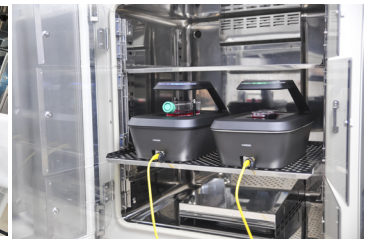
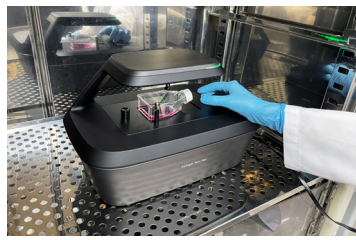
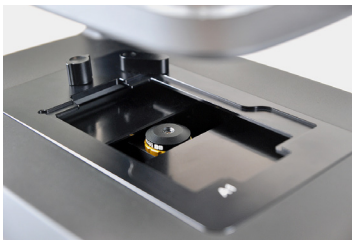
- Remotely monitor live cells inside the incubator without disturbing the environment suitable for cell culture. You can monitor cells in real-time or with the time-lapse function, cell images are captured automatically according to your research protocol and videos are easily made with simple clicks.

### Multi-position imaging

- Using the motorized stages that travel 117mm x 77mm, x and y axis respectively, multiple points within the travel range can be captured following the schedule (intervals, cycles, total time) set by the researcher.

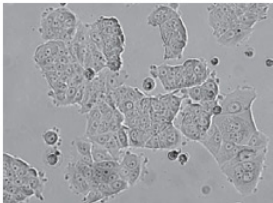
### Compatible with various vessel types

- Cells cultured in different vessel types can be imaged. Interchangeable vessel holders accommodate various vessel types including well-plate, culture flask, dish, and slide.

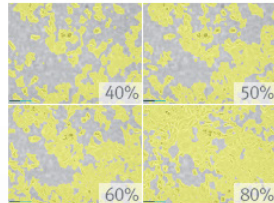


### Applications

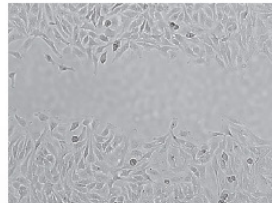
*Images taken with Celloger® Mini Plus (4X objectives, bright field & green /red fluorescence)*



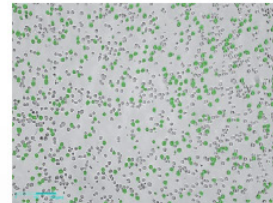
Cell monitoring



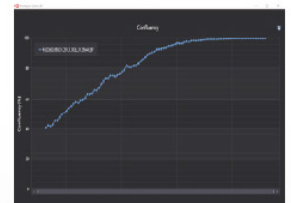
Cell proliferation



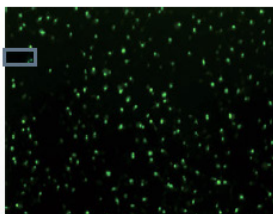
Wound healing assay



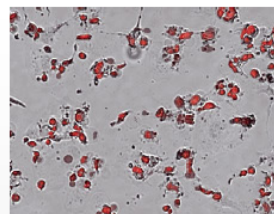
Coculture monitoring



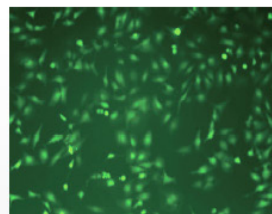
Cell culture & growth



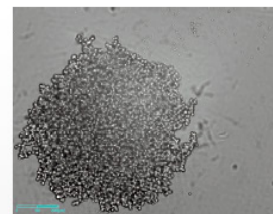
Apoptosis assay



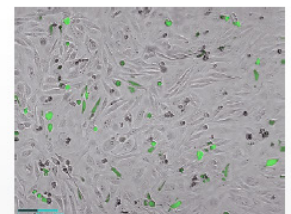
Cytotoxicity assay



Reactive oxygen species (ROS) detection



Spheroid screening assay



Transfection efficiency assessment

### Specifications

Model	CELLOGER® MINI PLUS
Operating environment	10~40°C, 20~95% humidity
Objective lens	4x / 10x
Field of view	2X (2.53 × 1.90 mm) / 4X (1.19 × 0.90 mm) / 10X (0.57 × 0.43 mm)
Imaging modes	Brightfield, Fluorescence (Green / Red)
Fluorescence	Green: Excitation (470/40x) / Emission (510lp) Red: Excitation (525/30x) / Emission (570lp)
Light source	LED
Camera	5MP CMOS
Stage	Motorized XYZ
Imaging positions	Multiple
Dimensions	226 x 358 x 215 mm

### Celloger® Mini Plus Models

Model No.	Description
CMP-B2	Bright Field, 2X
CMP-B4	Bright Field, 4X
CMP-B10	Bright Field, 10X
CMP-BG4	Bright Field + Green Fluorescence, 4X
CMP-BG10	Bright Field + Green Fluorescence, 10X
CMP-BR4	Bright Field + Red Fluorescence, 4X
CMP-BR10	Bright Field + Red Fluorescence, 10X