

SINCE 1889



Yamato Scientific
America

Electrophoresis Observation Device

Contents

RT-PV-051 ----- Page 3

NOTES

This image shows a blank sheet of white paper with horizontal dashed lines. The lines are evenly spaced and run across the width of the page, providing a guide for handwriting or drawing. There are no margins, text, or other markings on the paper.

Electrophoresis Observation Device



RealTime-PAGE View RT-PV-051

Light source
wavelength

645 nm

Field of view Ø 50mm



Quick Results

No CBB Staining Required

Real time observation of molecular movement in a transparent gel during electrophoresis

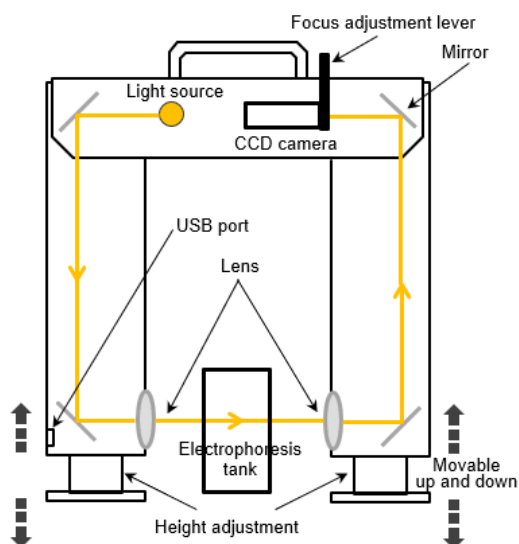
■ Features

- Allows for early confirmation of results through real-time observation, reducing time needed for electrophoresis experiments
- Reduces time, effort, and waste involved in protein purification
- Electrophoresis conditions (e.g. migration time) can be determined through observation
- Simple operation method makes it easy to use
- Lightweight device, portable with one hand, can be easily moved and used anywhere due to its USB power supply

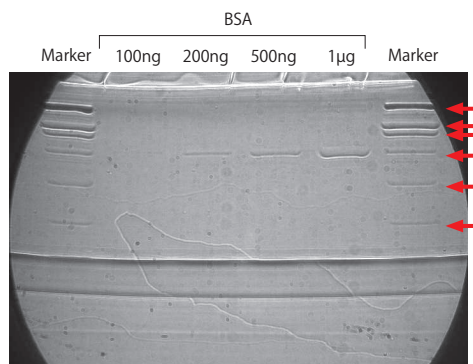
■ Specifications

Model	RT-PV-051 RealTime-PAGE View
Light source wavelength	645 nm
Detection method	Shadow graph (patent # 6281805)
Field of view	Ø50 mm
Power supply	USB supply (power always on)
External dimensions	W300×D80×H298mm (excludes legs and protrusions)
Weight	2.2 kg / 4.85 lbs.

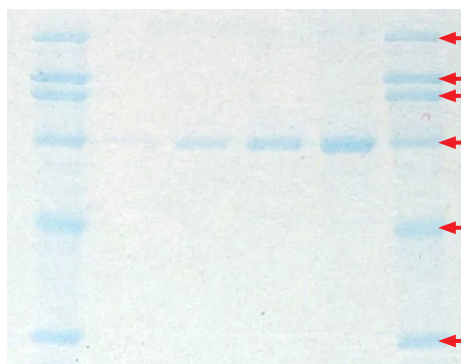
Due to the 50 mm diameter field of view, it's not feasible to observe the entire gel at once. However, by adjusting the electrophoresis chamber or device, different parts of the gel can be observed.



Comparison between real-time observation and post-electrophoresis gel CBB staining



RealTime-PAGE view of gel during electrophoresis



CBB staining of gel after electrophoresis

Arrows indicate positions of markers

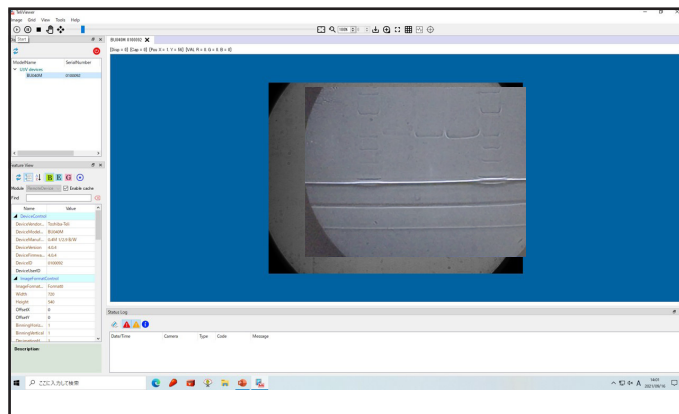
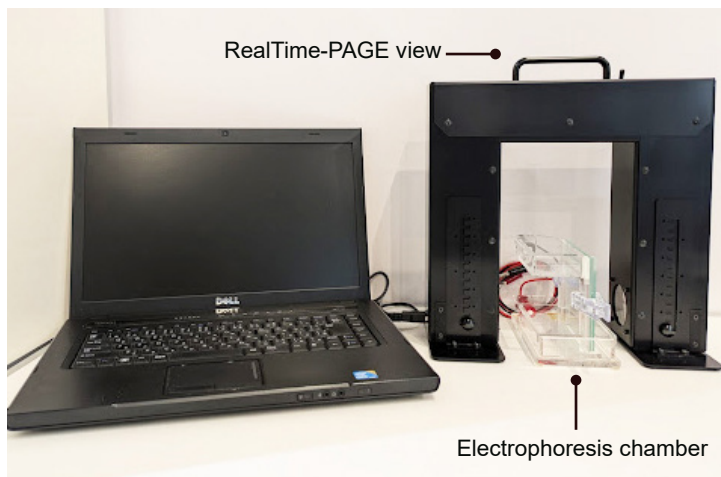
RealTime-PAGE view

Check without
staining

Early confirmation of
results through real-time
observation

Setting up the Device

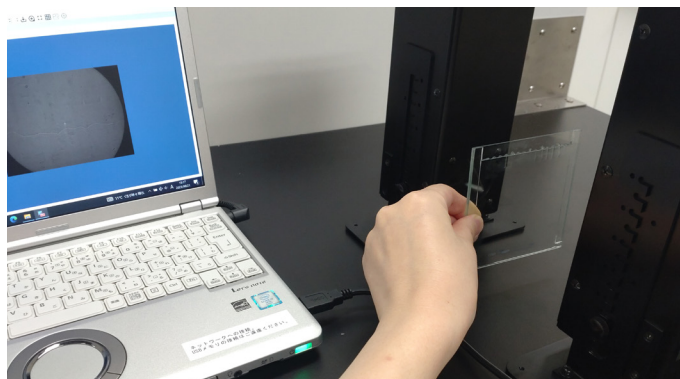
Place the device around the migration tank and connect it to a PC using the USB port. Launch the software to start observation with easy operations. You can save the observed images as still photos.



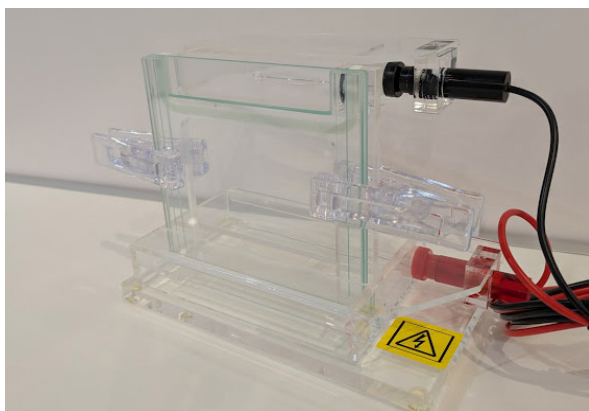
Software image

- Provide a computer that supports USB 3.0, as software installation is necessary to use this product.
- Observation may be challenging in migration chambers with light-blocking features at the observation area or in dual-connected migration chambers. For information on recommended items (options), contact Customer Service.

It is also beneficial for observing the gel post-electrophoresis to decide beforehand whether staining is necessary.



Electrophoresis chamber (operational accessory)



Specifications

Model	1004S
Plate dimensions	106 x 100 mm
Comb	10 samples x 1 mm
External dimension	70 x 115 x 120H mm

* Unit does not come with connecting cords

There is nothing in front of or behind the gel plate to obstruct the observation.
Sold together with RT-PV-051 RealTime-PAGE view.

Since no dyeing is required, no waste liquid is generated, contributing to a reduced environmental burden, which makes the unit environmentally friendly

Distributed by:

Yamato Scientific America Inc.

925 Walsh Ave., Santa Clara, CA 95050

Tel: 1-800-292-6286 / 408-235-7725

<https://www.yamato-usa.com>

Manufactured by:

Sosho, Inc.

2-1 Yamadaoka, Suita, Osaka 565-0871, Japan

313 Photonics Center Bldg, Osaka University

