

Magnetic Stirrer with Hot Plate

MADE
IN
JP

MFH800 / MFH810

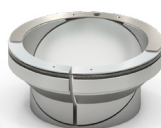
Speed Range 50 ~1600 rpm

Temp. control range RT +25°C to 310°C

Strong magnetic stirrer with hot plate for chemical synthesis experiments

Operation and functions

- Simple and intuitive operation
- Variable and convenient rotation functions
- Corrosion and chemical resistant ceramic coating stirring plate
- Equipped with circuit protector
- Strong magnetic force allows continuous stirring even when flask is removed
- Stirrer detachment detection function
- Recommended to work together with oil bath BOG and BOS Series
- Multiple options for aluminum block systems for oil-less synthesis experiments



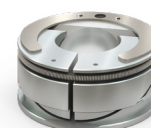
281568



281424



281421 / 281422



281430



281577

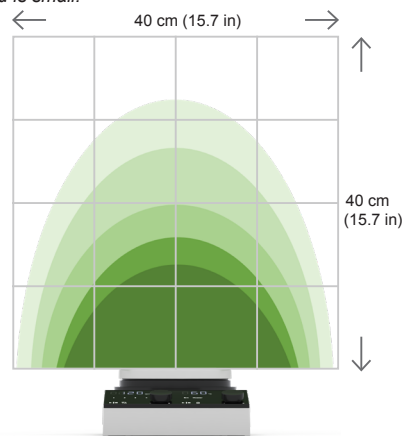
Specifications

Model	MFH800	MFH810
Max. stirring capacity (H ₂ O)	20L	
Plate material	Aluminum die casting (ceramic coating)	
Plate dimensions	Ø135 diameter	
Speed range	50 to 1600 rpm (set in 10 rpm increments)	
Temperature control range	RT +25°C to 310°C (set in 1°C increments)	
Temperature control accuracy	±1.5°C @ 100°C (internal temperature sensor) ±1.0°C @ 50°C (external temperature sensor)	
Motor	DC brushless motor (31W)	
Magnet	Neodymium magnet	
Display	White LED digital display	
Temperature control method	PID control	
Temperature sensor	PT100	
Heater	600W mica heater	
Exterior parts material	Aluminum die cast	
Rotation mode	Constant speed, step-out detection, intermittent, auto reverse, slow-up	
Safety functions	Overcurrent fuse, temperature upper limit error, overheating prevention (fixed temperature), high temperature warning	
Additional features	Service outlet, temperature high limit function, power failure recovery mode selection, calibration offset function	
Standard load capacity	30 kg or less	
Overcurrent fuse capacity	For internal circuit: 7A	For internal circuit: 5A
	For service outlet: 5A	
External dimensions WxDxH	165 × 275 × 90 mm	
Power supply (50/60 Hz)	115V 6A	220V 3A
Weight	3 kg	
Included accessories	1 heat plate, 1 protective cover, 2 screw caps, 1 power cord, 1 spare fuse (internal circuit, service outlet), 1 external temperature sensor	

Magnetic Force

Strong magnetic force allows stirring to continue even when flask is removed from the stirring table.

Range that can be stirred varies depending on the shape of the stirrer and the viscosity of the sample, but the figure shows an image of the range that can be stirred when the load is small.

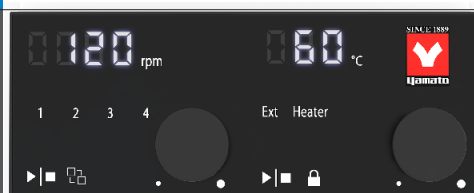


MFH800 with aluminum block samples

MFH800 + 281422



Control Panel



Rotation Mode Display

When mode number LED is off, unit rotates at a constant speed.

- No. 1: Step out detection
- No. 2: Intermittent
- No. 3: Auto reverse
- No. 4: Slow-up

Optional items

Product code	Model number	Description
281396	OA155	Protective cover
281394	OA153	External temperature sensor
281381	OA143	Pole set
281384	OA146	Container fall prevention frame
281385	OA147	Stage for lab jack
281587	OA183	Power cord (round terminal 2m)
281382	OA144	Aluminum block handle
281383	OA145	Dual-handed aluminum block handle